

ALL **NEW** 5<sup>TH</sup> GENERATION

**SERIES**

EMPOWERED  
**INNOVATION**



**PRO VMC PLUS**  
**SERIES**

ONE NUMBER - MULTI SOLUTIONS

FOR SALES INQUIRIES & CUSTOMER CARE

**96-1098-1098**



# PRO - 400 V PLUS

VERTICAL MACHINING CENTER

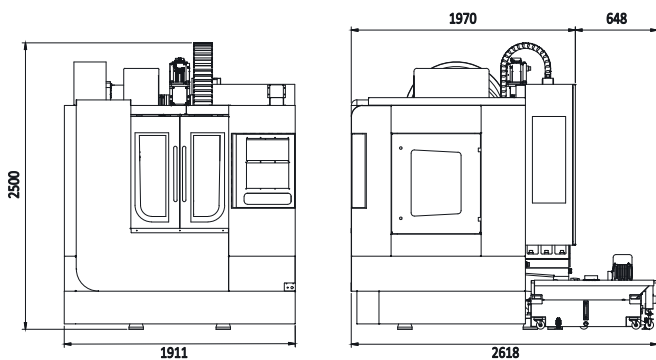


TABLE SIZE	MM	630x300
AXIS STROKE (X / Y / Z)	MM	400 / 350 / 400
RAPID FEED RATES X/Y/Z AXIS	M/MIN	24 / 24 / 24
LOAD CAPACITY	KG	300
SPINDLE	-	BT 40
RATED POWER	KW	5.5 / 7.5
WEIGHT (APPROX)	KG	2000
DIMENSIONS (APPROX) (WXDXH)	MM	1650x2618x2450

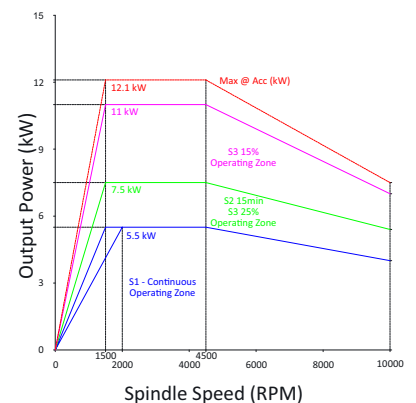
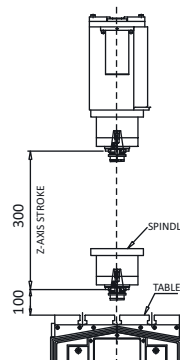
## COMPONENTS



## MACHINE DIMENSIONS



## MACHINING RANGE & POWER DIAGRAM



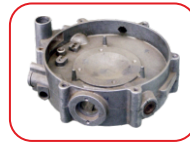
# PRO - 500 V PLUS

VERTICAL MACHINING CENTER

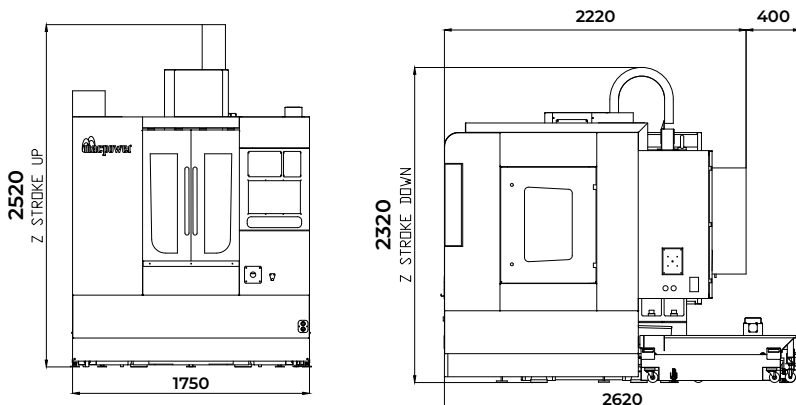


TABLE SIZE	MM	650x400
AXIS STROKE (X / Y / Z)	MM	500 / 450 / 400
RAPID FEED RATES X/Y/Z AXIS	M/MIN	24 / 24 / 24
LOAD CAPACITY	KG	350
SPINDLE	-	BT 40
RATED POWER	KW	5.5 / 7.5
WEIGHT (APPROX)	KG	2800
DIMENSIONS (APPROX) (WXDXH)	MM	1750x2620x2520

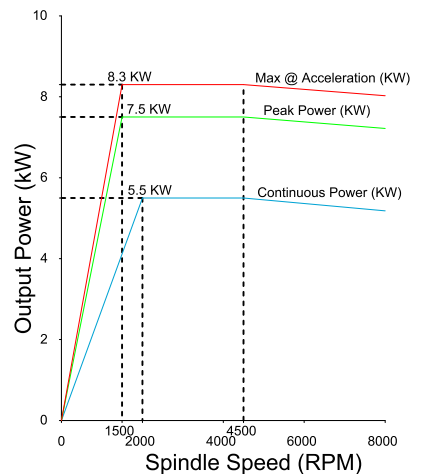
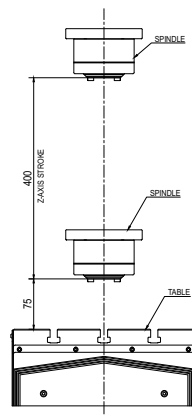
## COMPONENTS



## MACHINE DIMENSIONS



## MACHINING RANGE & POWER DIAGRAM



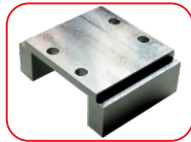
# PRO - 600 V PLUS

VERTICAL MACHINING CENTER

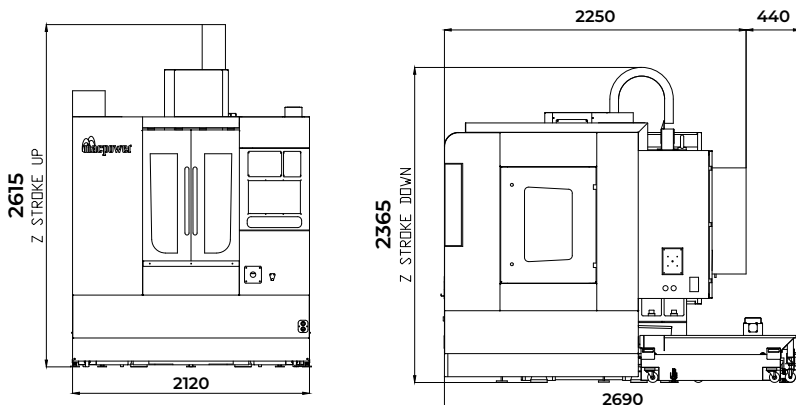


TABLE SIZE	MM	750x400
AXIS STROKE (X / Y / Z)	MM	600 / 450 / 500
RAPID FEED RATES X/Y/Z AXIS	M/MIN	24 / 24 / 24
LOAD CAPACITY	KG	400
SPINDLE	-	BT 40
RATED POWER	KW	5.5 / 7.5
WEIGHT (APPROX)	KG	3100
DIMENSIONS (APPROX) (WxDxH)	MM	2120x2690x2615

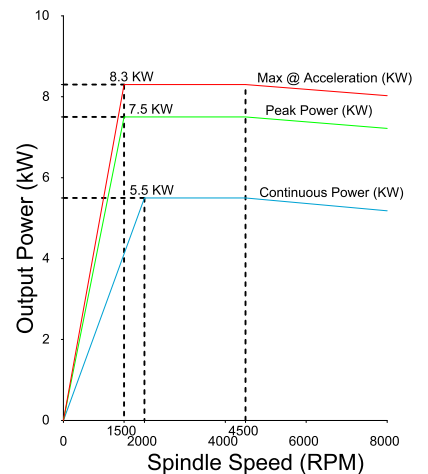
## COMPONENTS



## MACHINE DIMENSIONS



## MACHINING RANGE & POWER DIAGRAM



# PRO - 700 V PLUS

VERTICAL MACHINING CENTER

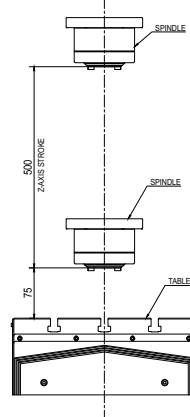
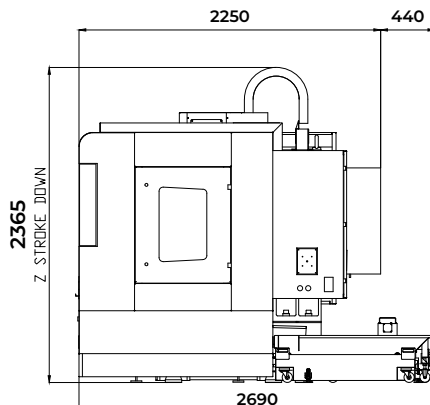
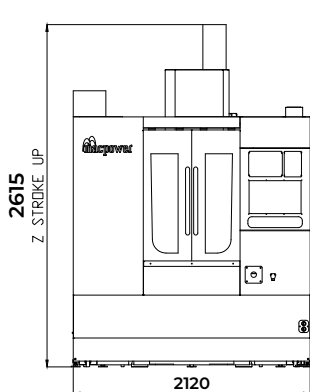


TABLE SIZE	MM	850x400
AXIS STROKE (X / Y / Z)	MM	700 / 450 / 500
RAPID FEED RATES X/Y/Z AXIS	M/MIN	24 / 24 / 24
LOAD CAPACITY	KG	400
SPINDLE	-	BT 40
RATED POWER	KW	5.5 / 7.5
WEIGHT (APPROX)	KG	3400
DIMENSIONS (APPROX) (WDXH)	MM	2120x2690x2615

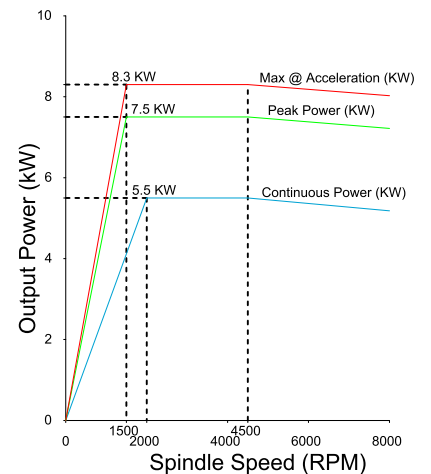
## COMPONENTS



## MACHINE DIMENSIONS



## MACHINING RANGE & POWER DIAGRAM



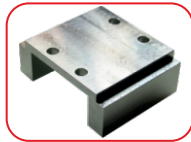
# PRO - 800 V PLUS

VERTICAL MACHINING CENTER

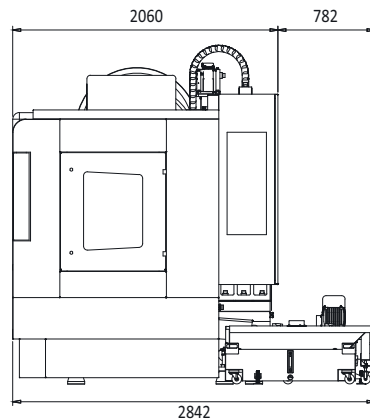
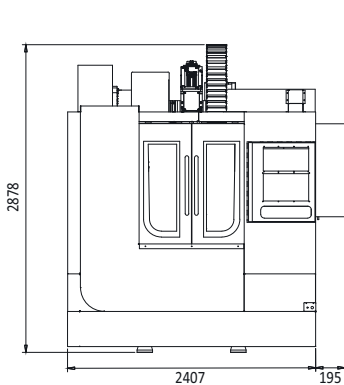


TABLE SIZE	MM	1000x500
AXIS STROKE (X / Y / Z)	MM	800 / 500 / 500
RAPID FEED RATES X/Y/Z AXIS	M/MIN	24 / 24 / 24
LOAD CAPACITY	KG	500
SPINDLE	-	BT 40
RATED POWER	KW	7.5 / 11
WEIGHT (APPROX)	KG	4600
DIMENSIONS (APPROX) (WDXH)	MM	2602x2842x2878

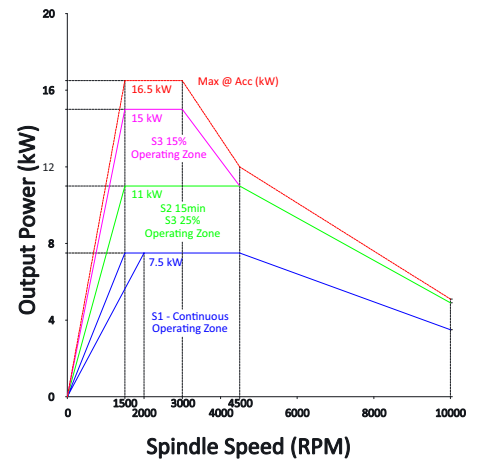
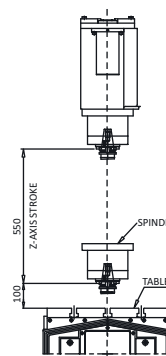
## COMPONENTS



## MACHINE DIMENSIONS



## MACHINING RANGE & POWER DIAGRAM



# ACCESSORIES

## STANDARD

- ROLLER GUIDEWAYS
- 20 TOOL ATC
- WORK LIGHT
- HAND WHEEL
- LEVELING PAD
- RING COOLANT
- PATROL LIGHT
- AIR GUN
- CENTRALIZED  
LUBRICATION SYSTEM
- DRY AIR CUTTING

## OPTIONAL

- COOLANT GUN
- AUTO DOOR
- CHIP CONVEYOR
- STABILIZER
- TOOL PROBE
- WORK PROBE
- TOOLED UP SOLUTIONS
- FLUSH COOLANT

# PRO VMC SERIES MACHINE CONFIGURATIONS

DESCRIPTION	UNIT	PRO 400 V	PRO 500 V	PRO 600 V
<b>CAPACITY</b>		<b>PLUS</b>	<b>PLUS</b>	<b>PLUS</b>
X AXIS TRAVEL	MM	400	500	600
Y AXIS TRAVEL	MM	350	450	450
Z AXIS TRAVEL	MM	400	400	500
RAPID FEED RATES X/Y/Z AXIS	M/MIN	24/24/24	24/24/24	24/24/24
DISTANCE FROM TABLE TOP TO SPINDLE FACE	MM	75-475	75-475	75-575
<b>TABLE</b>				
TABLE SIZE (CLAMPING AREA)	MM	630X300	650X400	750X400
NO./WIDTH/CD OF T-SLOTS	MM	3/14/80	3/14/125	3/14/125
MAX SAFE LOAD ON TABLE	KG	300	350	400
<b>MAIN SPINDLE</b>				
TAPER	-	BT40	BT40	BT40
RPM	-	80-8000	80-8000	80-8000
CUTTING FEED RATE	MM/MIN.	1-10000	1-10000	1-10000
<b>SPINDLE MOTOR</b>				
CONTINUOUS RATING	KW	5.5/7.5	5.5/7.5	5.5/7.5
<b>AUTO TOOL CHANGER</b>				
TYPE	-	ARM	ARM	ARM
NO. OF TOOLS	-	20	20	20
TOOL SELECTION	-	RANDOM /	RANDOM /	RANDOM /
MAX. TOOL DIA. (POCKET FULL/EMPTY)	MM	BI-DIRECTIONAL 80/125	BI-DIRECTIONAL 80/125	BI-DIRECTIONAL 80/125
TOOL LENGTH	MM	300	300	300
TOOL WEIGHT	MM	8	8	8
<b>ACCURACY (AS PER JIS)</b>				
POSITIONING	MM	0.01	0.01	0.01
REPEATABILITY	MM	0.00	0.007	0.007
<b>INSTALLATION DATA</b>				
PNEUAMTIC SUPPLY	BAR	6	6	6
MACHINE WEIGHT (APPROX)	KG	2000	2800	3100
TOTAL CONNECTED LOAD	KVA	20	20	20
POWER SUPPLY	-	"AC 440 V, 50HZ, 3 PH."	"AC 440 V, 50HZ, 3 PH."	"AC 440 V, 50HZ, 3 PH."
<b>MACHINE DIMENSIONS</b>				
(WXDXH) (APPROX)	MM	1650x2450x2450	1750x2620x2520	2120x2690x2615
<b>SYSTEM</b>				
MITSUBISHI	-	M80B	M80B	M80B
FANUC	-	OI MF PLUS	OI MF PLUS	OI MF PLUS
SIEMENS	-	828D	828D	828D

# PRO VMC PLUS SERIES MACHINE CONFIGURATIONS

DESCRIPTION	UNIT	PRO 700 V	PRO 800 V
<b>CAPACITY</b>		<b>PLUS</b>	<b>PLUS</b>
X AXIS TRAVEL	MM	700	800
Y AXIS TRAVEL	MM	450	500
Z AXIS TRAVEL	MM	500	500
RAPID FEED RATES X/Y/Z AXIS	M/MIN	24/24/24	24/24/24
DISTANCE FROM TABLE TOP TO SPINDLE FACE	MM	75-575	100-600
<b>TABLE</b>			
TABLE SIZE (CLAMPING AREA)	MM	850X400	1000X500
NO./WIDTH/CD OF T-SLOTS	MM	3/14/125	4/18/100
MAX SAFE LOAD ON TABLE	KG	400	500
<b>MAIN SPINDLE</b>			
TAPER	-	BT40	BT40
RPM	-	80-8000	80-8000
CUTTING FEED RATE	MM/MIN.	1-10000	1-10000
SPINDLE MOTOR			
CONTINUOUS RATING	KW	5.5/7.5	7.5/11
<b>AUTO TOOL CHANGER</b>			
TYPE	-	ARM	TWIN ARM
NO. OF TOOLS	-	20	20
TOOL SELECTION	-	RANDOM /	RANDOM
MAX. TOOL DIA. (POCKET FULL/EMPTY)	MM	BI-DIRECTIONAL 80/125	80/150
TOOL LENGTH	MM	300	300
TOOL WEIGHT	MM	8	7
<b>ACCURACY (AS PER JIS)</b>			
POSITIONING	MM	0.01	0.01
REPEATABILITY	MM	0.007	0.007
<b>INSTALLATION DATA</b>			
PNEUAMTIC SUPPLY	BAR	6	6
MACHINE WEIGHT (APPROX)	KG	3400	4600
TOTAL CONNECTED LOAD	KVA	20	19
POWER SUPPLY	-	"AC 440 V, 50HZ, 3 PH."	"AC 440 V, 50HZ, 3 PH."
<b>MACHINE DIMENSIONS</b>			
(WXDXH) (APPROX)	MM	2120x2690x2615	2602x2842x2878
<b>SYSTEM</b>			
MITSUBISHI	-	M80B	M80B
FANUC	-	OI MF PLUS	OI MF PLUS
SIEMENS	-	828D	828D

# FOR MORE INFORMATION PLEASE CONTACT

## WEST ZONE

Rajkot	:	93777 87930
Jamnagar	:	74860 42366
Surendranagar	:	74860 42366
Morbi	:	93777 87930
Bhavnagar	:	93777 87930
Ahmedabad	:	93775 87930
Sanand	:	93775 87930
Anand	:	93775 87930
Baroda	:	63560 02810
Halol	:	63560 02810
Surat	:	63560 02810
Vapi	:	63560 02810
Mumbai (C)	:	70964 55955
Mumbai (W)	:	93203 87930
Nasik	:	93713 87930
Aurangabad	:	93456 87930
Kolhapur	:	70690 11499
Pune	:	93210 87930
Ahmednagar	:	93210 87930

## NORTH ZONE

Delhi	:	76000 10288
Faridabad	:	74860 29853
Ghaziabad	:	70690 75161
Noida	:	70690 75161
Gurugram	:	72111 08487
Haryana	:	89504 69265
Sonipat	:	89504 69265
		72111 02818
Ludhiana	:	99886 93302
Mohali	:	99886 93302
Jaipur	:	72111 88869
Alwar	:	72111 88869
Jodhpur	:	72111 88869

## EAST ZONE

Kolkata	:	93758 45361
Jameshedpur	:	93758 45361

## SOUTH ZONE

Hyderabad	:	70961 50505
Bangalore	:	72111 03869
Chennai	:	63560 02822
Belgaum	:	91641 02610
Coimbatore	:	72111 02822
Trichy	:	72111 02822
Kerala	:	72111 02822

## CENTRAL ZONE

Indore	:	99747 97756
Bhopal	:	87706 96570

*at  
your service  
anytime  
anywhere*

**macpower**

**MACPOWER CNC MACHINES LTD.**

Regd. office address : Plot No. 2234, Near Kranti Gate,  
GIDC, Metoda – 360 021. Rajkot, Gujarat. (INDIA)

+91 2827 287930/31    sales@macpowercnc.com    www.macpowercnc.com



Note : Technical Specifications and Colors are subject to change as a part of continuous development.